

TECHNICAL BULLETIN

Issue 1 - Volume 3 • April 2020

EPIC HF

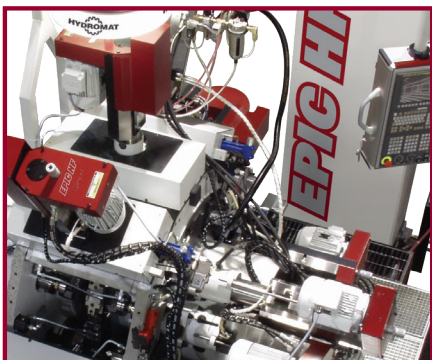
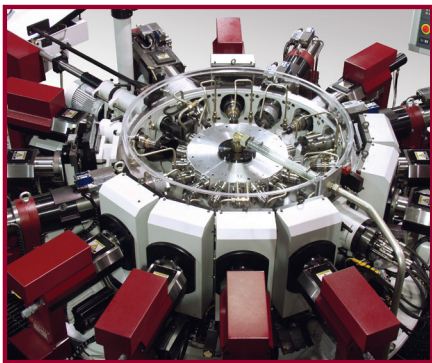
NEW TECHNOLOGY: EPIC HF FANUC

The **Hydromat EPIC HF FANUC** line of rotary transfer machines can be equipped with collets or chucks for precision metal cutting. This exceptional design is a modular system consisting of horizontal and vertical toolspindles mounted around a precision cast base.

EPIC HF FANUC machines utilize 12 or 16 horizontal machining stations and have the available capacity of six vertical tool spindles on a 12-station machine and eight vertical tool spindles on a 16-station machine.



Control architecture geared for performance and reliability.



- Fanuc G-code programming – the most widely-used control language in the world.
- Uses standard, affordable induction motors for most common machining operations.
- Hydromat HMI software provides maximum ease-of-use & reliability for daily operations.
- Vector spindle drives located in air-conditioned electrical cabinet.
- Uses Fanuc servo motors with optional Hydromat **Thread-Advantage** and **Shred-Advantage** deep machine learning technology. (See other side to learn more.)
- Mean time between failure measured in decades for all electrical equipment.
- No plugs on command or feedback cables - Mil-Spec connectors.
- No valve programming.
- No junction boxes attached to spindle.



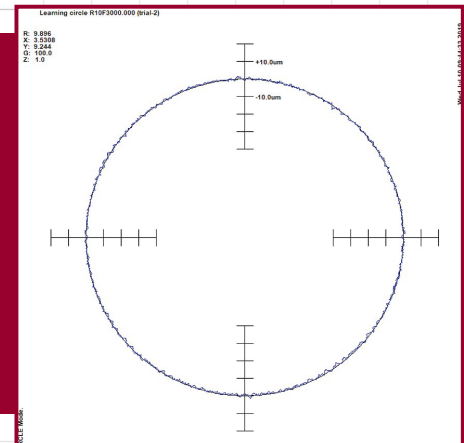
HYDROMAT INC. • ADVANCED MACHINING SOLUTIONS

EPIC HF

Hydromat Deep Machine Learning

Hydromat's deep machine learning allows faster feed rates while holding exact profiles. HSM (High Speed Machining) techniques can be used from the latest CAM software, reducing cycle times and improving part quality.

Right: With deep machine learning engaged.

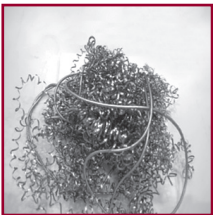


FANUC Operational Features & Control Benefits

- Widely recognized as an industry-standard controller on the worlds best-in-class machine tools.
- Nanometer resolution provides high precision and smooth finish surfaces.
- Reliable and proven hardware provide stable performance and maximum operational uptime.
- High-speed, high precision, operations result in high-quality machining with reduced cycle times.
- Simple familiar operation allows maximum productivity as operators to get up-to-speed quickly.
- Connectivity through standard 100-MBit Ethernet interface permits easy process data collection and remote diagnostics troubleshooting.
- Macros and PC interconnectivity extend the ability of the machine creating customized process solutions.
- Simulation tools provide effective training in part programming and maintenance in a safe and stable environment.
- Hydromat is an **AUTHORIZED FANUC CNC SYSTEM INTEGRATOR**.

Shred-Advantage Technology

Optional Hydromat oscillation chip breaking technology. The feed axis oscillates with each revolution of the spindle to eliminate stringy chips.



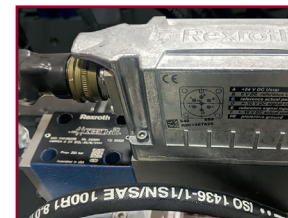
Thread-Advantage Technology

Optional thread milling & tapping technologies:

- Thread mill up to 10x faster with precise and accurate position control.
- Lightning fast, perfectly synchronized tapping is possible.



No attached junction boxes.



Mil-Spec connectors. Valves require no programming.